



Exposed

An outline of the features and benefits



ePipe ServerWare Exposed!

Table of Contents

<i>ePipe ServerWare enables organizations to use many Internet connection types</i>	<i>3</i>
<i>ePipe ServerWare includes Intelligent Internet Bonding (I2B)</i>	<i>4</i>
<i>ePipe ServerWare includes bandwidth on demand and time based links</i>	<i>5</i>
<i>ePipe ServerWare includes a packet filtering firewall and time based filter rules.....</i>	<i>6</i>
<i>ePipe ServerWare includes automatic link fail-over</i>	<i>7</i>
<i>ePipe ServerWare includes more bandwidth for existing VPNs</i>	<i>8</i>
<i>ePipe ServerWare VPNs are Site-to-Site</i>	<i>9</i>
<i>ePipe ServerWare will work with IKE VPN devices</i>	<i>10</i>
<i>ePipe ServerWare offers an all-in-one solution.....</i>	<i>11</i>

About Stallion Technologies

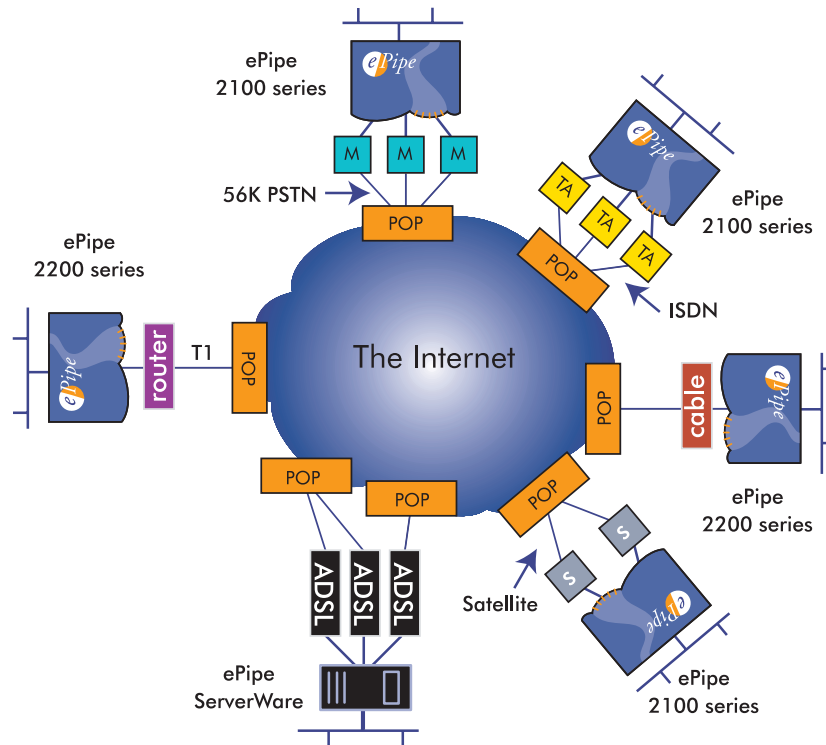
Stallion Technologies is a developer of Internet access, remote access, virtual private networking (VPN) and serial connectivity solutions for multi-site Small to Medium Businesses (SMBs). Since inception in 1985, Stallion has focused on developing innovative solutions with an emphasis on security, reliability and cost of ownership. The company has met the evolving needs of organizations, from connectivity for centralized computing to remote LAN access and multi-platform access.

Stallion's products are used in a wide range of vertical markets, including healthcare, hospitality, ticketing/vending, retail point of sale, gaming and factory automation. Stallion Technologies is a privately owned Australian company with offices in the USA and is represented in over 20 countries.

See www.stallion.com

ePipe ServerWare Exposed!

ePipe ServerWare enables organizations to use many Internet connection types



ePipe ServerWare (as with the ePipe 2000 family) supports any type of Internet connection.

Connection types supported include:

- PSTN – Standard analog telephone service
- ISDN
- xDSL (ADSL, SDSL, HDSL, SHDSL)
- Cable (cable TV)
- Satellite
- Standard leased line (T1/E1, etc.)

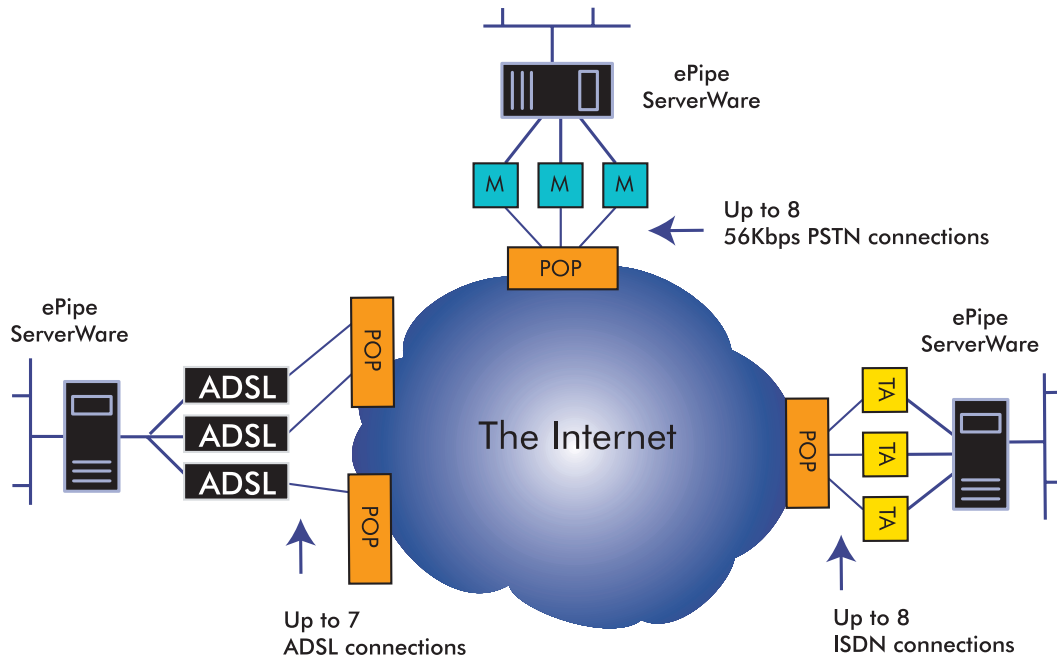
ePipe ServerWare enables an office to connect to the Internet without hardware imposed limitations.

What this means for business is:

- Connection anywhere as ePipe ServerWare will connect to the Internet anywhere provided there is some type of telecommunications network and an Internet Service Provider to connect. This is particularly useful for any organisation that has an office in a rural or remote location where access to broadband connections is limited. This can include a ship in the middle of the ocean with satellite based Internet connection. **ePipe ServerWare truly delivers "access anywhere".**

ePipe ServerWare Exposed!

ePipe ServerWare includes Intelligent Internet Bonding (I2B)



Intelligent Internet Bonding or I2B provides faster Internet access to businesses. I2B brings web pages, email and files down multiple Internet connections. I2B combines an arbitrary number of connections into a single, bonded channel that provides faster access to standard Internet traffic (web, e-mail, more simultaneous ftp sessions, etc.), balancing the data load across the multiple links. I2B will operate across multiple ADSL, ISDN or PSTN PPP connections. See the I2B FAQs for more information.

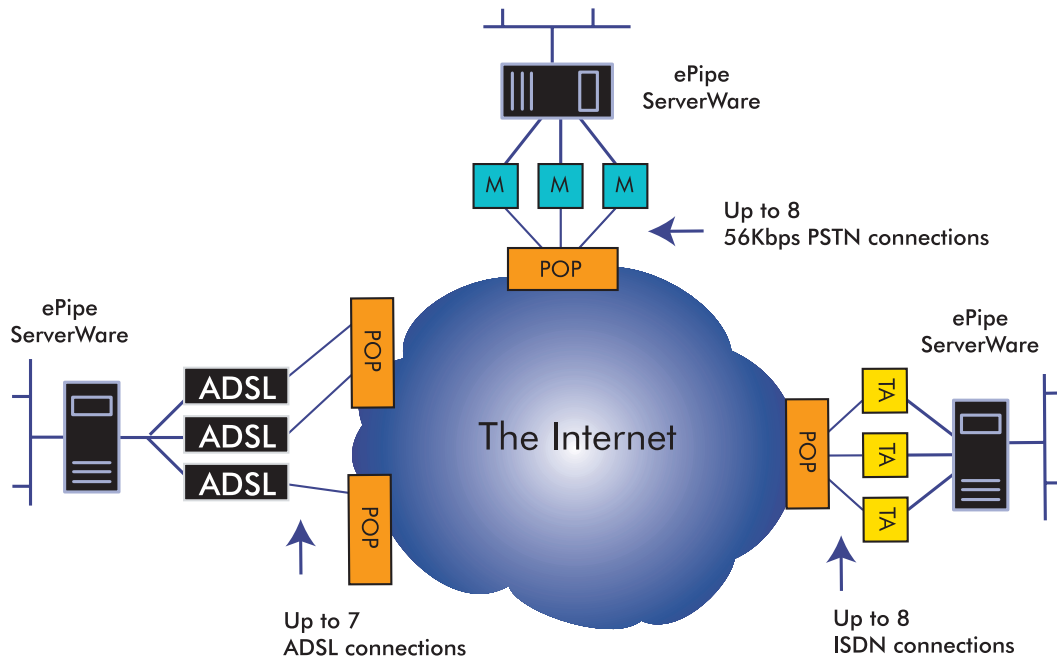
Unlike other methods of bandwidth aggregation, ePipe ServerWare delivers bandwidth without any ISP intervention. Connections across multiple ISPs are bonded to provide redundant connections should an ISP's service become unavailable.

What this means for business is:

- Higher productivity. Less time spent waiting for downloads, email, etc.
- Reduced costs. By utilizing multiple low cost Internet connections instead of more expensive high bandwidth access. Typically, broadband Internet connections (ADSL) are the best value for money. If broadband is not available, ePipe ServerWare at least lets organizations increase bandwidth using multiple low cost connections. For organizations that want more than what broadband offers, ePipe ServerWare allows multiple ADSL connections to be bonded to create a wide data pipe.

ePipe ServerWare Exposed!

ePipe ServerWare includes bandwidth on demand and time based links



Bandwidth on demand scales bandwidth to suit current needs. Internet links can dynamically connect and disconnect based on the demand for bandwidth. As the Internet access load increases, ePipe ServerWare will establish additional connections. When demand reduces, those additional links are dropped.

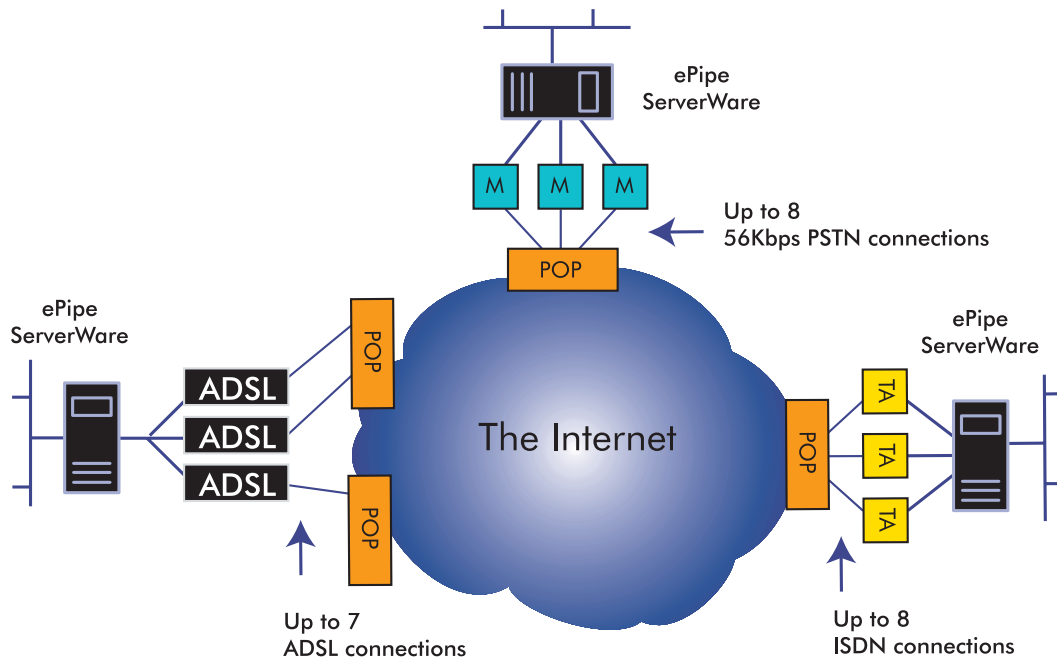
Time constraints can also be applied to Internet links. ePipe ServerWare can be configured to connect more links to the Internet based on time of day. For example, three ADSL links may be required during business hours and only one link maintained throughout the night.

What this means for business is:

- Lower Internet access costs as businesses using ePipe ServerWare will only pay for the time online that they need. ePipe ServerWare scales bandwidth for organisations that have time based telecommunications costs or time based Internet access.
- More control over Web browsing policy as time based bandwidth control can be used to facilitate or limit Internet access during specified time periods.

ePipe ServerWare Exposed!

ePipe ServerWare includes a packet filtering firewall and time based filter rules



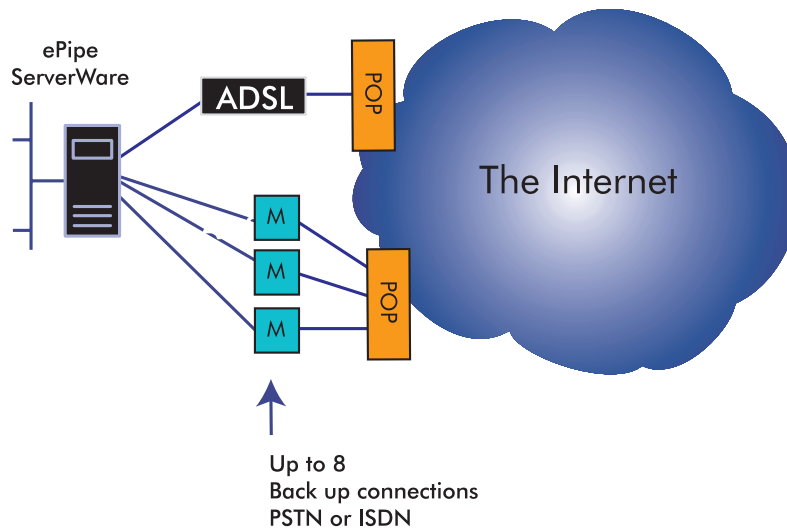
ePipe ServerWare provides firewall protection. The firewall included in ePipe ServerWare is “locked down” by default. Prior to configuring the firewall to allow traffic through, all traffic will be stopped. ePipe ServerWare’s firewall can be configured to permit or restrict data traffic based its type (i.e. HTTP web pages, FTP files, NNTP news) and the time of day (i.e. from 9am to 10am).

What this means for business is:

- Security by protecting data; ePipe ServerWare provides protection for a business from external attack by hackers.
- Internet activity policy enforcement by restricting web browsing or other Internet activity to specific times of the day.
- Improvements in productivity through restricted Internet activity.

ePipe ServerWare Exposed!

ePipe ServerWare includes automatic link fail-over



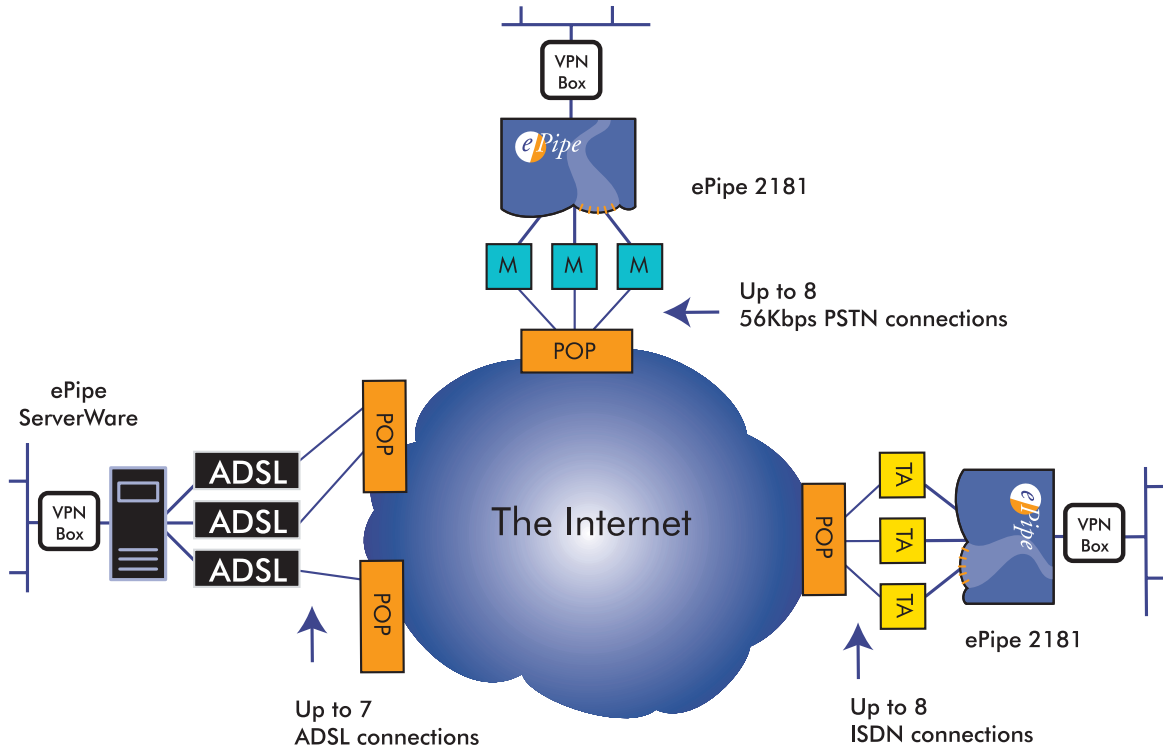
ePipe ServerWare has an automatic link fail-over capability that detects when Internet access is lost and then establishes an alternate link. ePipe ServerWare continues to test the primary connection and, when available, will re-establish that primary link. This all occurs automatically with minimal disruption to the network.

What this means for business is:

- Less downtime as email and other Internet traffic will continue to move in and out of the network.
- There is minimal disruption to network as the alternative link is quickly established.
- Easy management as the fail over to the alternative link and return to the primary link occur automatically.

ePipe ServerWare Exposed!

ePipe ServerWare includes more bandwidth for existing VPNs



ePipe ServerWare’s connection bonding technology extends beyond providing high speed Internet access. Multiple connections that are made via the Internet using ePipe ServerWare or an ePipe hardware device can be bonded “End to End”. Stallion Technologies patent pending E2B technology delivers high bandwidth that makes Virtual Private Networks viable. One of the most limiting factors affecting Virtual Private Networks is bandwidth. Most current VPN hardware offerings assume a single broadband Internet connection.

This is where Stallion Technologies is different. By bonding multiple Internet connections to deliver bandwidth, Stallion Technologies has broken through the limitation that has restricted deployment of VPNs.

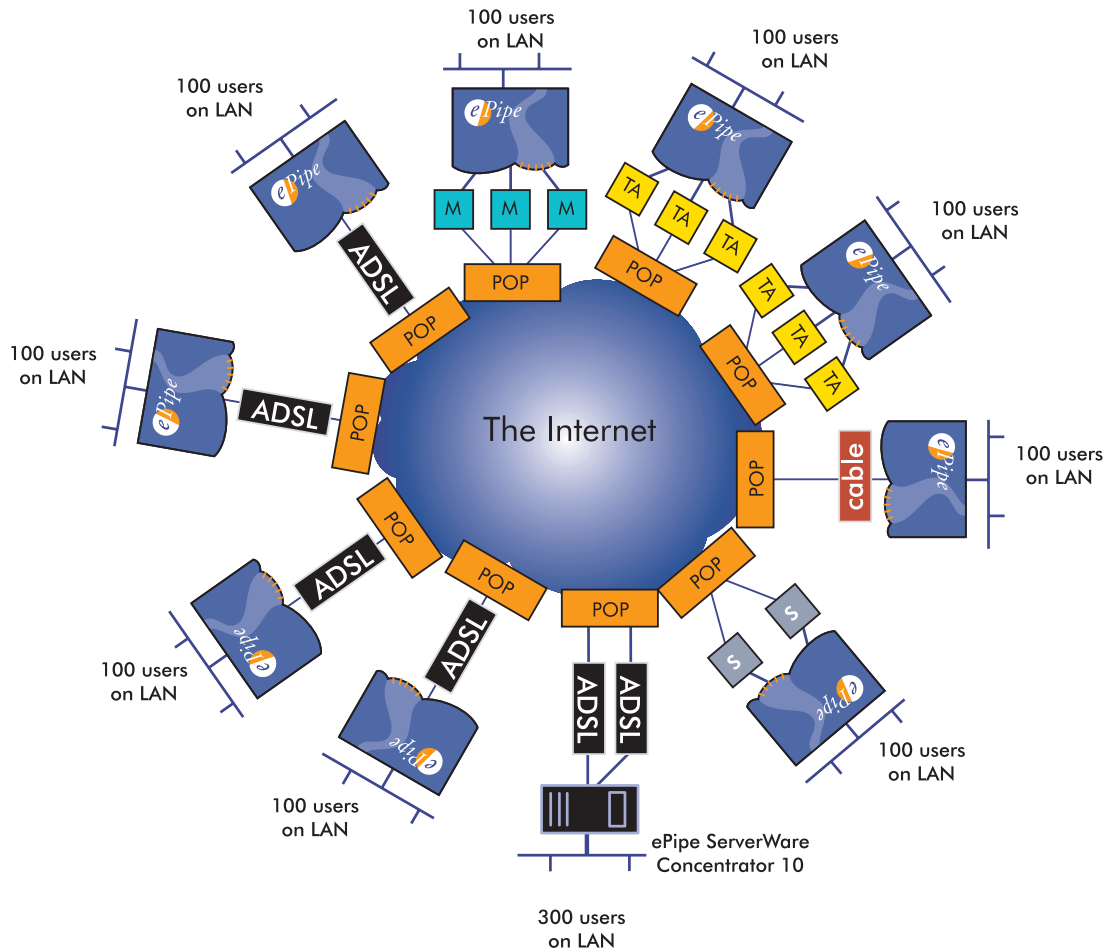
Unlike other bandwidth aggregation technologies, ePipe ServerWare does not need to match connections on a 1 to 1 basis. Up to eight PSTN or ISDN connections or up to seven ADSL connections can be mixed to give optimal bandwidth for each site in the network.

What this means for business is:

- The performance of existing Virtual Private Networks can be enhanced using Stallion Technologies End to End Bonding.
- Performance gains can be realized regardless of the number or type of Internet connection.
- Cost savings when used in conjunction with bandwidth on demand, as businesses will only pay for what they use.
- Less down time with the link fail over ability of ePipe ServerWare.

ePipe ServerWare Exposed!

ePipe ServerWare VPNs are Site-to-Site



ePipe ServerWare will terminate many VPN tunnels from ePipe 2000 hardware devices. The bandwidth aggregation achieved with E2B is inherent in all ePipe devices with Site-to-Site VPN (SSV) activated. Unlike other VPN devices that are licensed as a User-to-User VPN, where the number of VPN tunnels is limited to the number of individual users within the network, **Stallion Technologies' VPNs are licensed by site.**

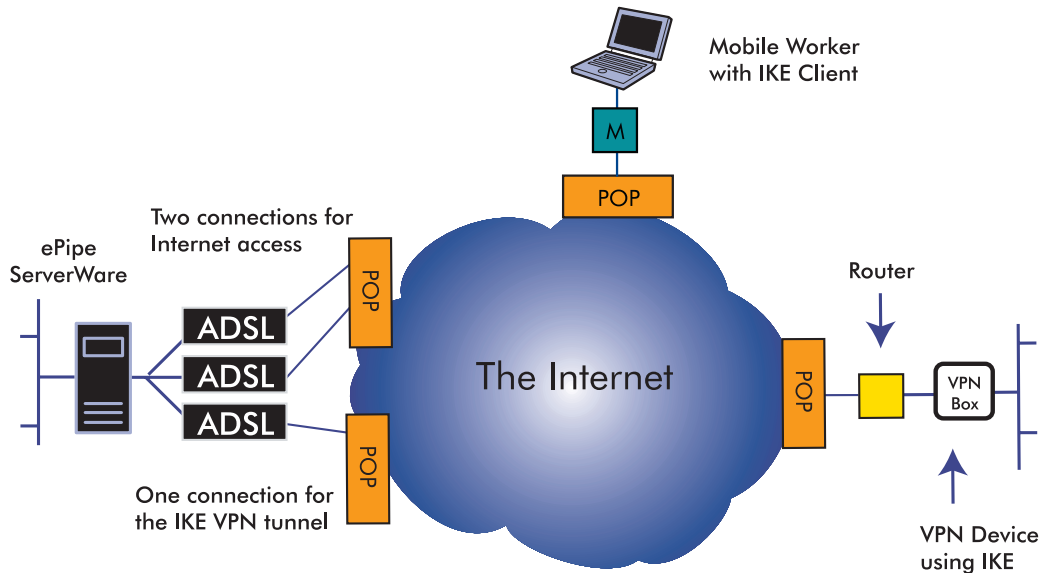
Conceptually, ePipe ServerWare Concentrator 10 has the capacity to network 11 offices, connecting thousands of users. ePipe provides an extremely cost effective VPN. ePipe ServerWare Concentrator 500 has the potential to network large multinational corporations.

What this means for business is:

- Lower set up costs, when compared to other VPN products that are licensed by number of users, ePipe ServerWare is very cost effective.
- Lower ongoing costs, some VPN products provide time-limited licenses for users. ePipe ServerWare and ePipe hardware products do not have time limited licensing.
- Management of the VPN is simpler as additional licenses do not need to be purchased to add a new user to the network.

ePipe ServerWare Exposed!

ePipe ServerWare will work with IKE VPN devices



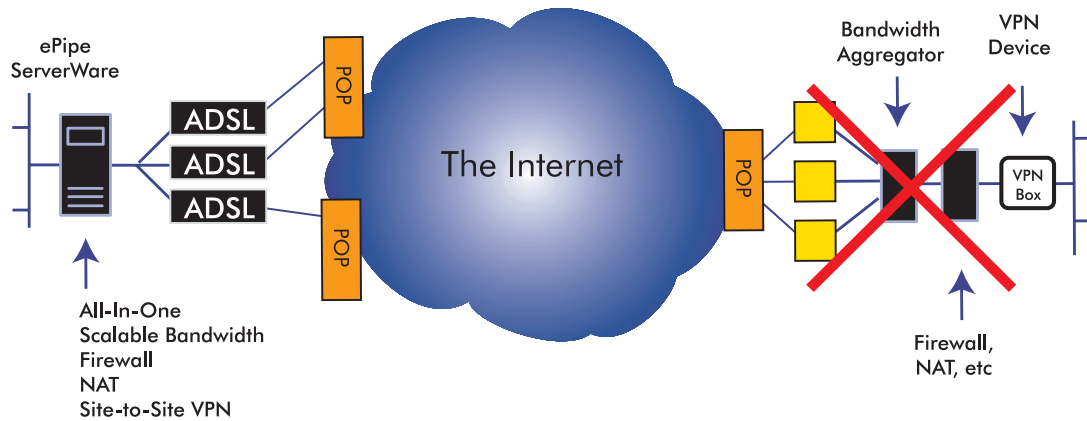
Using Internet Key Exchange (IKE) with shared secret authentication, ePipe ServerWare will terminate Virtual Private Network tunnels with VPN devices from other manufacturers. ePipe ServerWare creates Virtual Private Network tunnels with other devices providing interoperability with other popular hardware and software.

What this means for business is:

- Ease of implementation as ePipe ServerWare will work with most popular existing hardware.
- Flexibility as VPN solutions can be customised without being limited to a single device or platform.
- Cost savings as ePipe ServerWare does not require the replacement of existing hardware.

ePipe ServerWare Exposed!

ePipe ServerWare offers an all-in-one solution



ePipe ServerWare is an all in one solution, combining bandwidth aggregation, firewall protection, Network Address Translation and Virtual Private Networking in a single device.

What this means for business is:

- A simpler network configuration that reduces management costs.
- Less time and effort is spent attempting compatible configurations across multiple devices.
- Less down time as assistance for the network can be obtained from a single source rather than being handled across brands or across different product support engineers that often have difficulty in agreeing on a solution.

When comparing the total price, ePipe ServerWare is a simple, cost effective solution for any business.